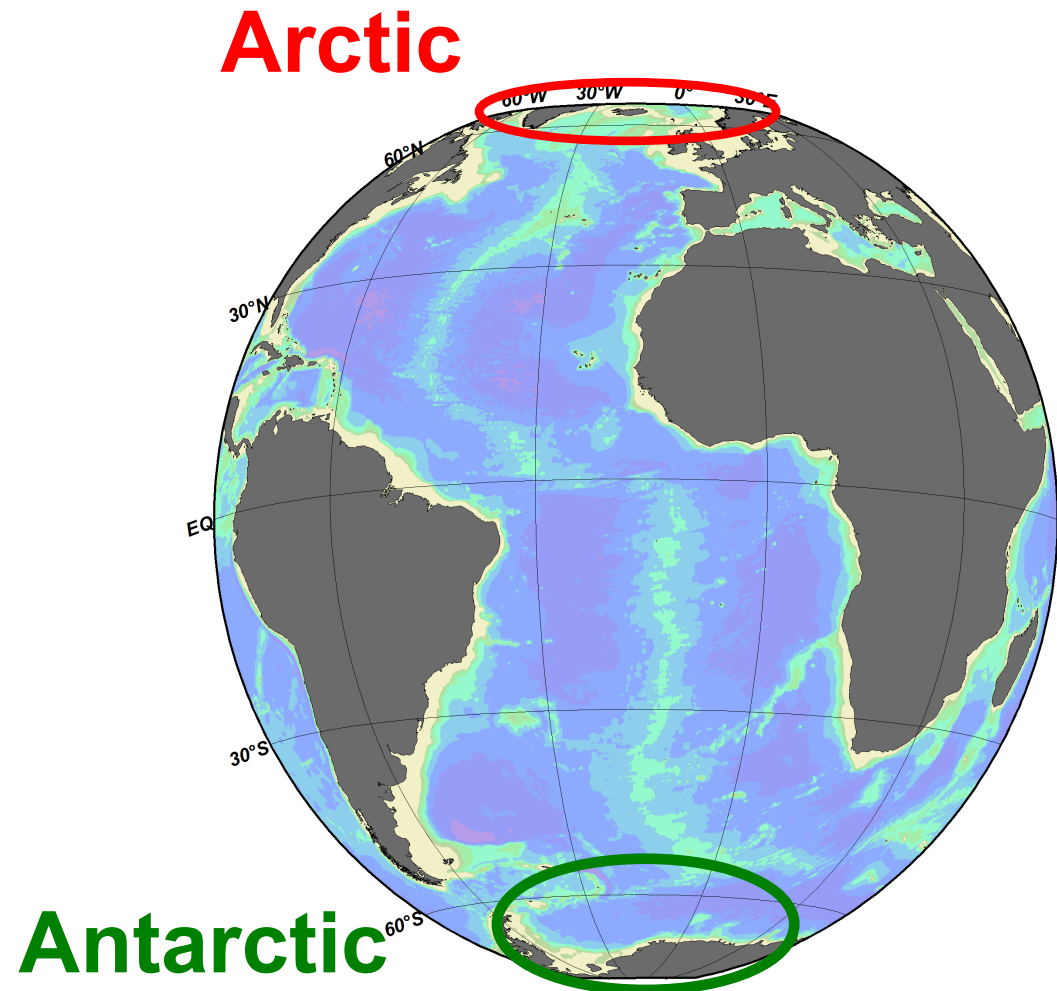


Using Argo under sea ice

Olaf Klatt
Olaf Boebel
Eberhard Fahrbach

Alfred-Wegener-Institut, Bremerhaven



Outline

- Antarctic
 - Towards ice compatible floats
 - Ice Sensing Algorithm
 - Interim Store
 - RAFOS-Receivers
 - Array of Sound sources
- Outlook

Floats in the sea ice



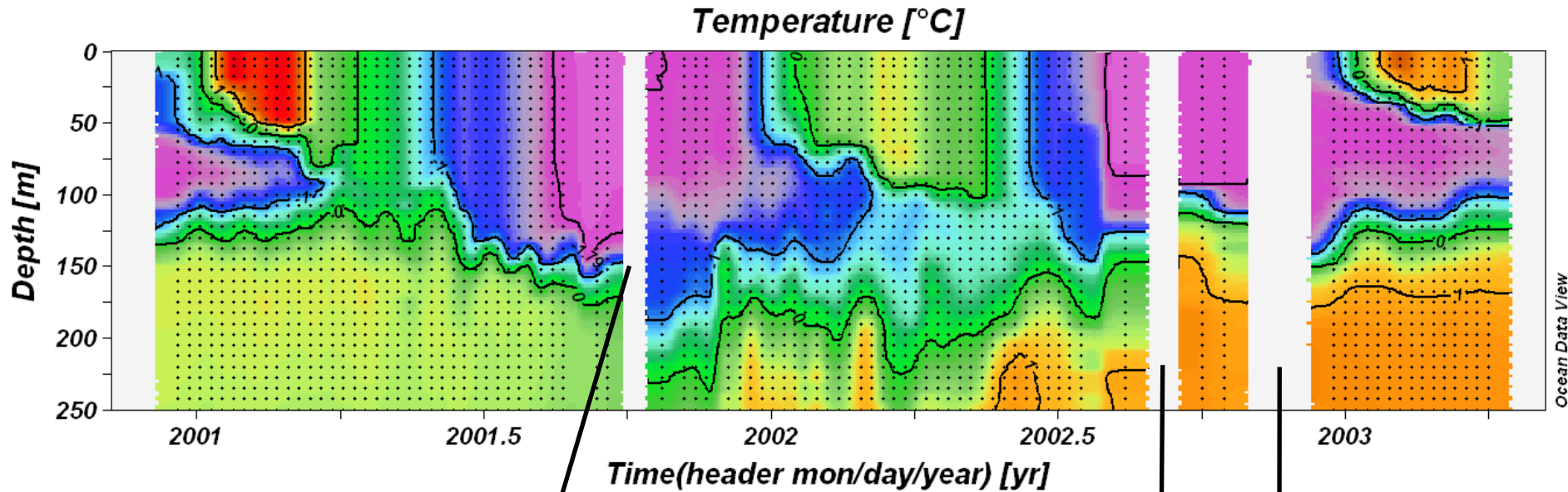
Ice compatibility of Argo floats: a 3 step process

Ice sensing algorithm (ISA) 2003	Interim storage (iStore) 2005	RAFOS 2008
Aborts ascent when sea – ice is expected at the surface	Provides delayed mode profile when surfacing impossible	Provides subsurface profile position when surfacing impossible

Ice compatibility of Argo floats: a 3 step process

Ice sensing algorithm (ISA) 2003	Interim storage (iStore) 2005	RAFOS 2008
Aborts ascent when sea –ice is expected at the surface	Provides delayed mode profile when surfacing impossible	Provides subsurface profile position when surfacing impossible

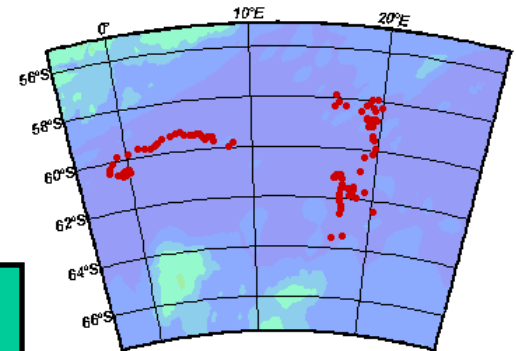
Ice Sensing Algorithm



$T = -1.79 \text{ }^{\circ}\text{C}$ braces
missing profiles

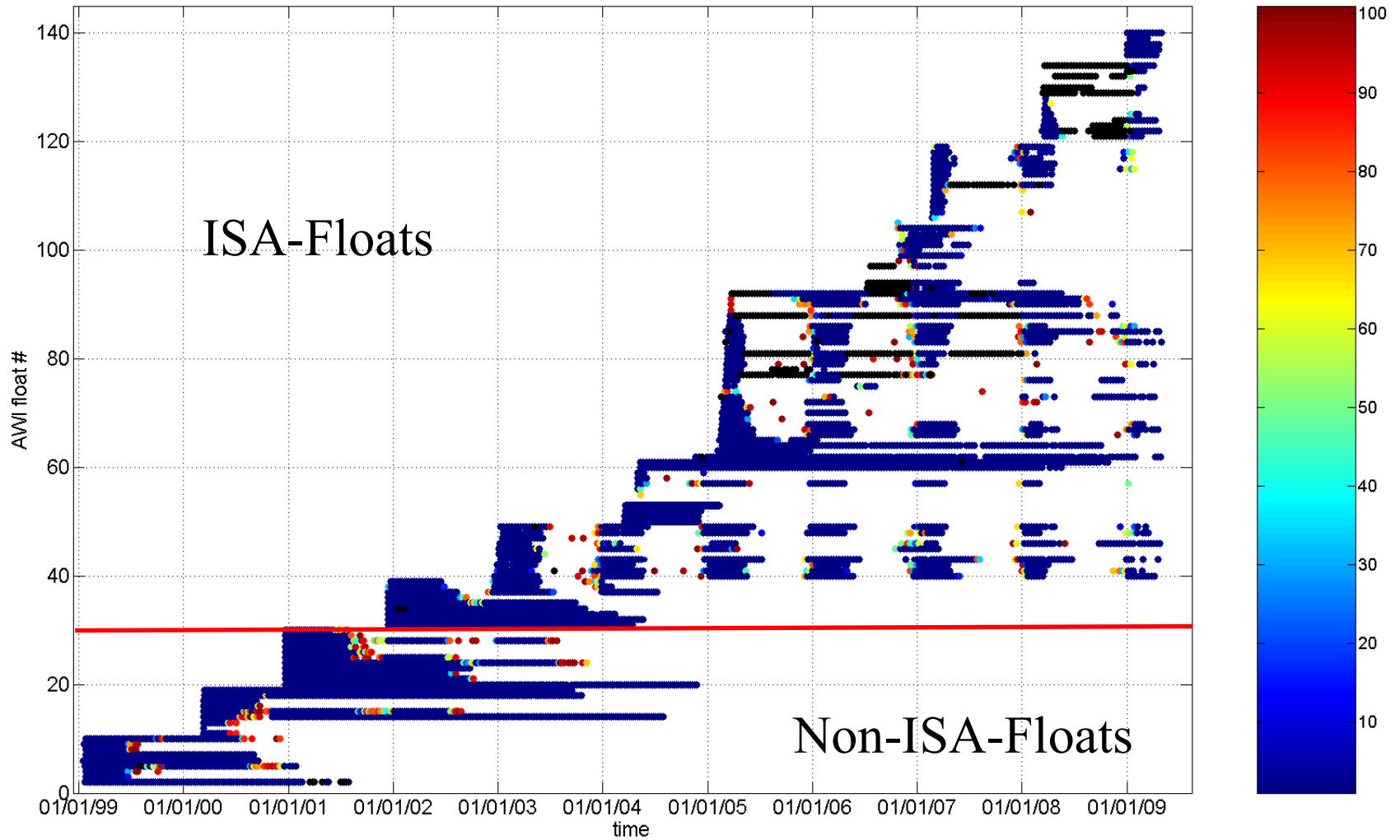
Median ($T_{|p=(50,45,40,35,30,25,20 \text{ dbar})} \leq -1.79 \text{ }^{\circ}\text{C}$):

-> abort surface attempt

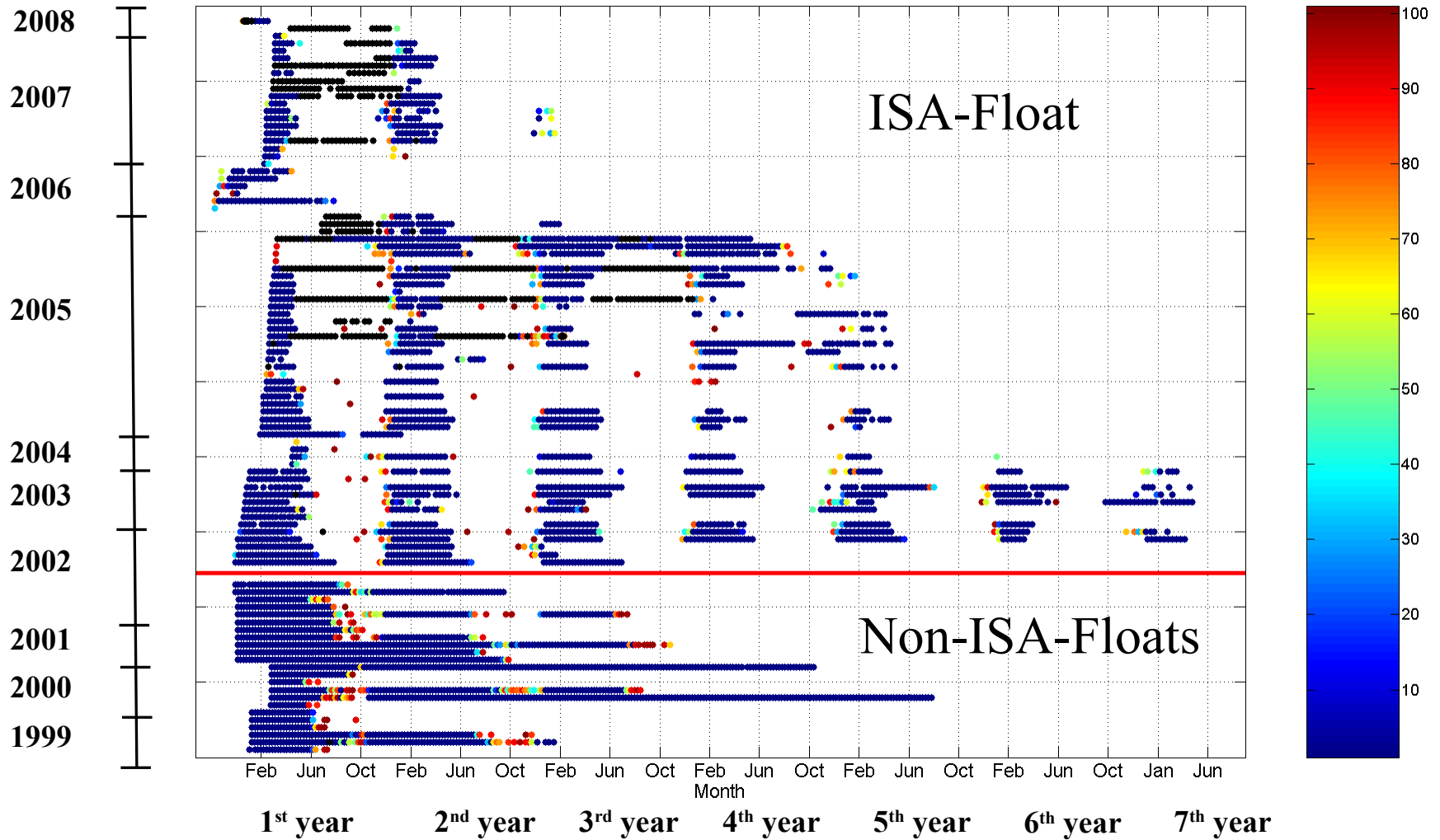


AWI_028

Floats vs. ice coverage



Floats vs. ice coverage



Ice compatibility of Argo floats: a 3 step process

Ice sensing algorithm (ISA) 2003	Interim storage (iStore) 2005	RAFOS 2008
Aborts ascent when sea – ice is expected at the surface	Provides delayed mode profile when surfacing impossible	Provides subsurface profile position when surfacing impossible
Successfully 80% survival rate modifications are planed		

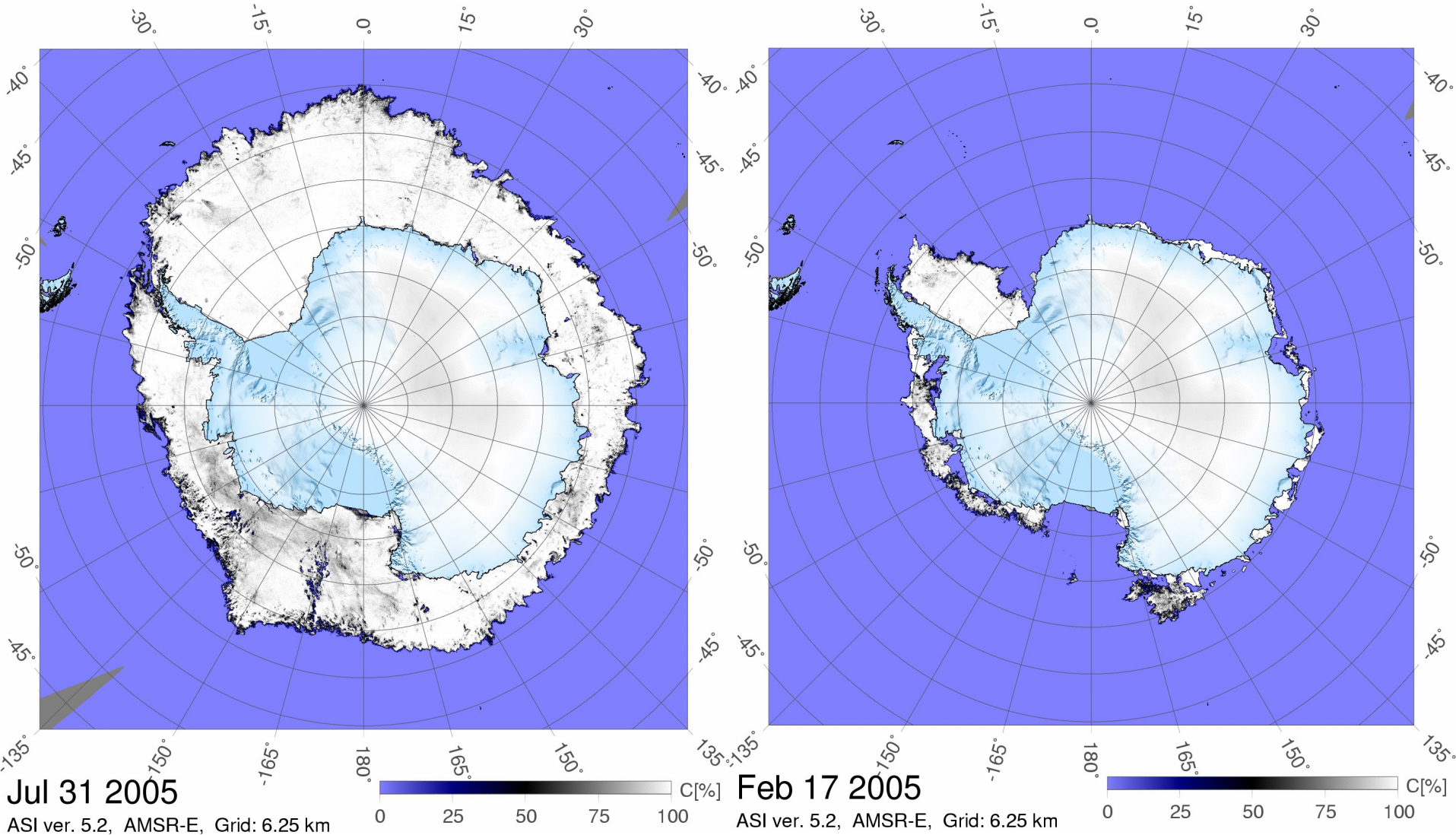
Ice compatibility of Argo floats: a 3 step process

Ice sensing algorithm2 (ISA2) 2007	Interim storage (iStore) 2005	RAFOS 2008
Aborts ascent when sea – ice is expected at the surface +Retarded response	Provides delayed mode profile when surfacing impossible	Provides subsurface profile position when surfacing impossible
Successful Update under test		

Ice compatibility of Argo floats: a 3 step process

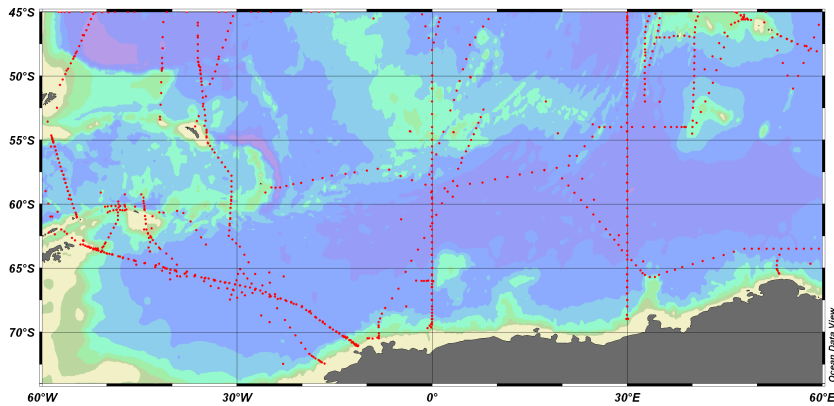
Ice sensing algorithm2 (ISA2) 2007	Interim storage (iStore) 2005	RAFOS 2008
<p>Aborts ascent when sea – ice is expected at the surface</p> <p>+Retarded response</p>	<p>Provides delayed mode profile when surfacing impossible</p>	<p>Provides subsurface profile position when surfacing impossible</p>
<p>Successful Update under test</p>		

Interim data Storage (iStore)



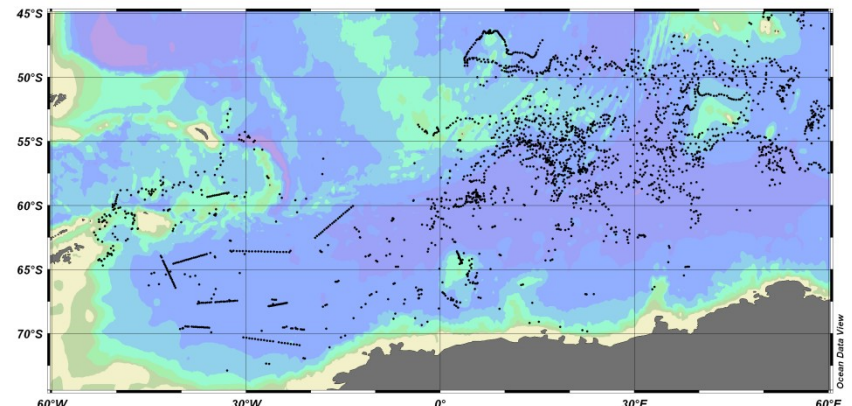
Weddell Sea data

**WOCE: CTD-stations
winter**



< 300 CTD casts

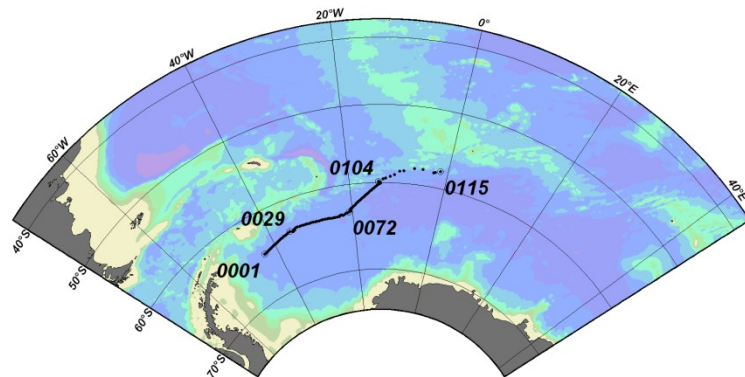
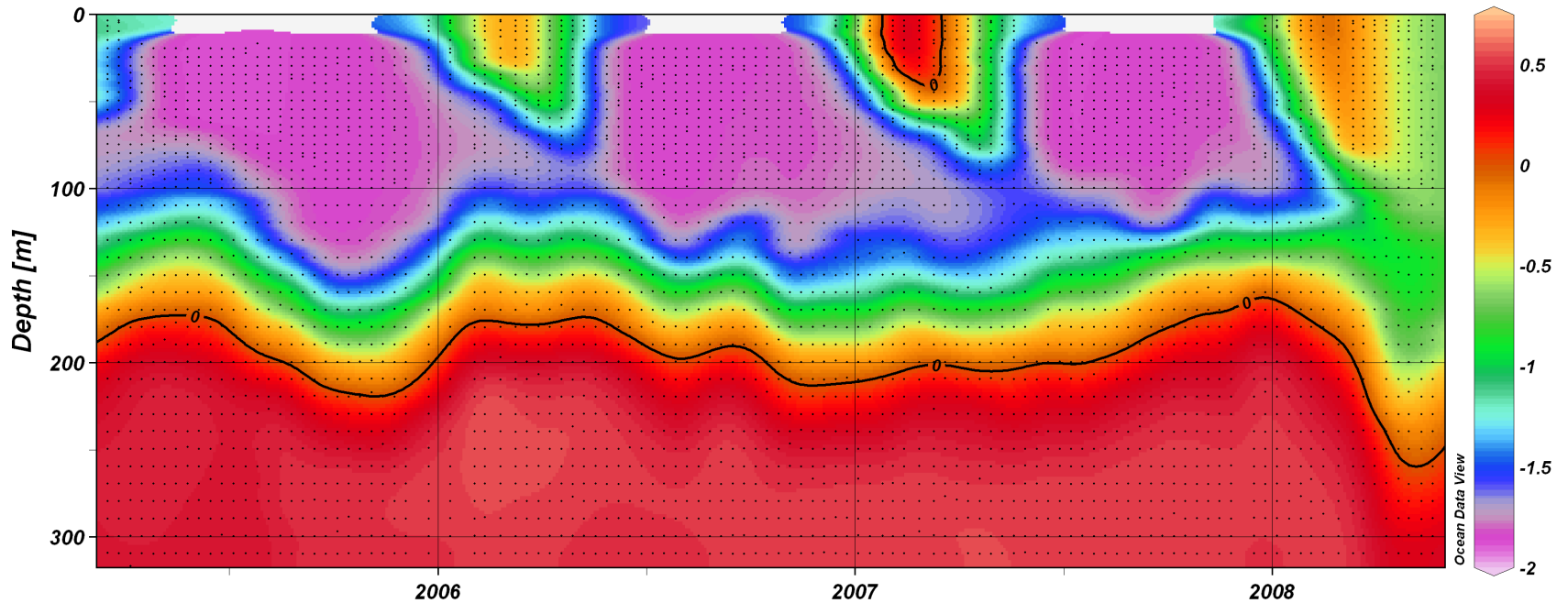
**AWI floats
winter**



>2500 float profiles

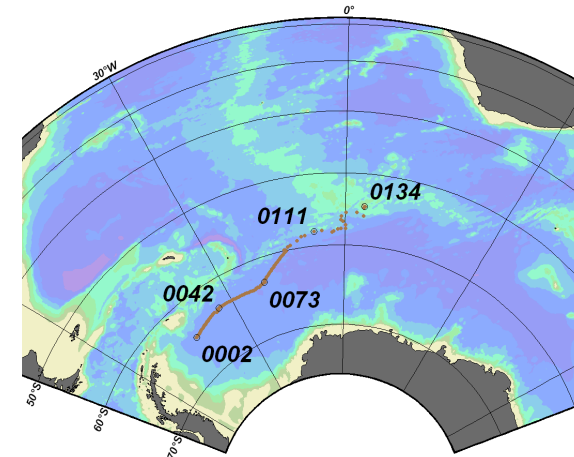
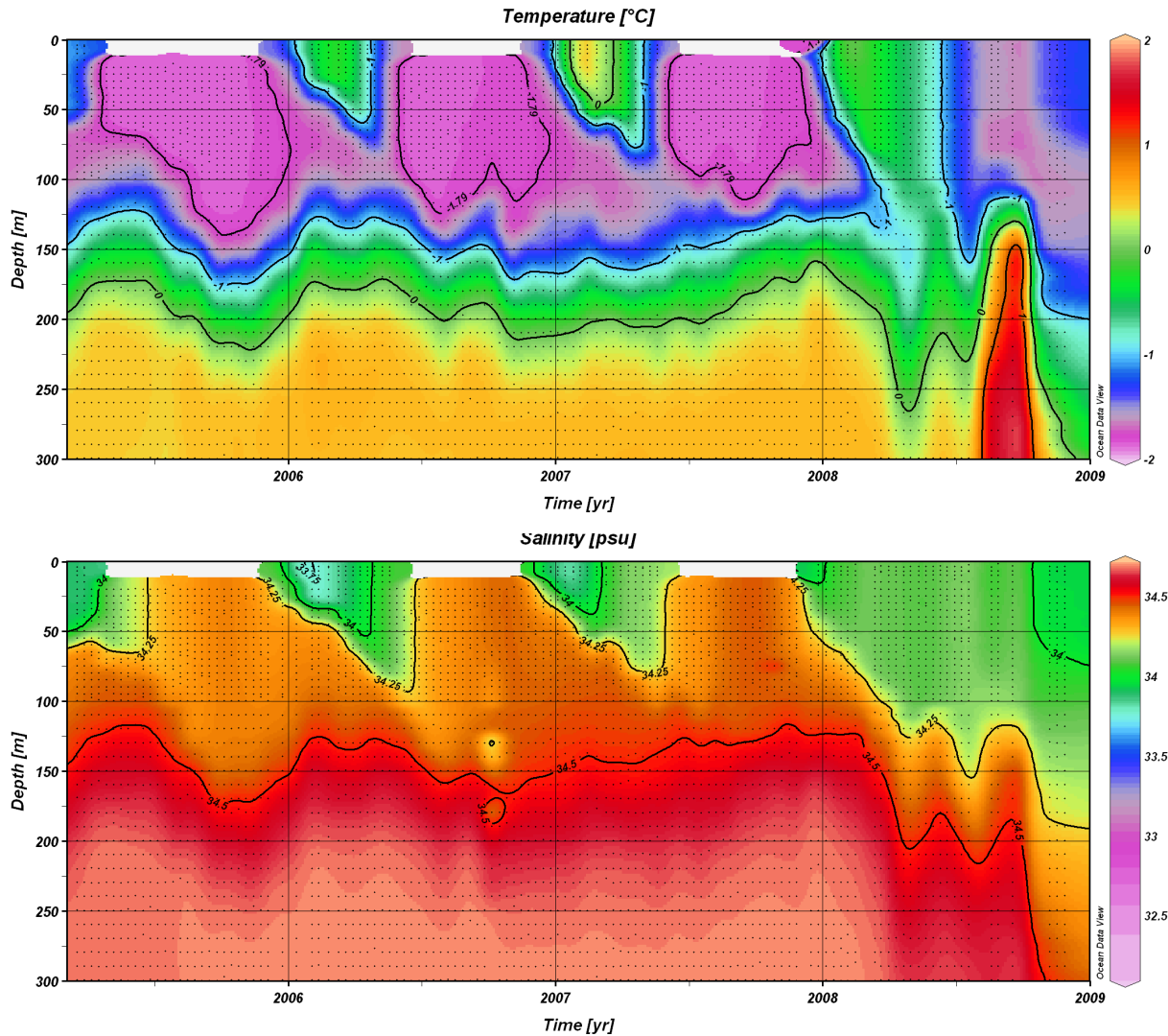
All-season data: Temperature

Temperature [°C]



AWI_088
wmo number: 7900086

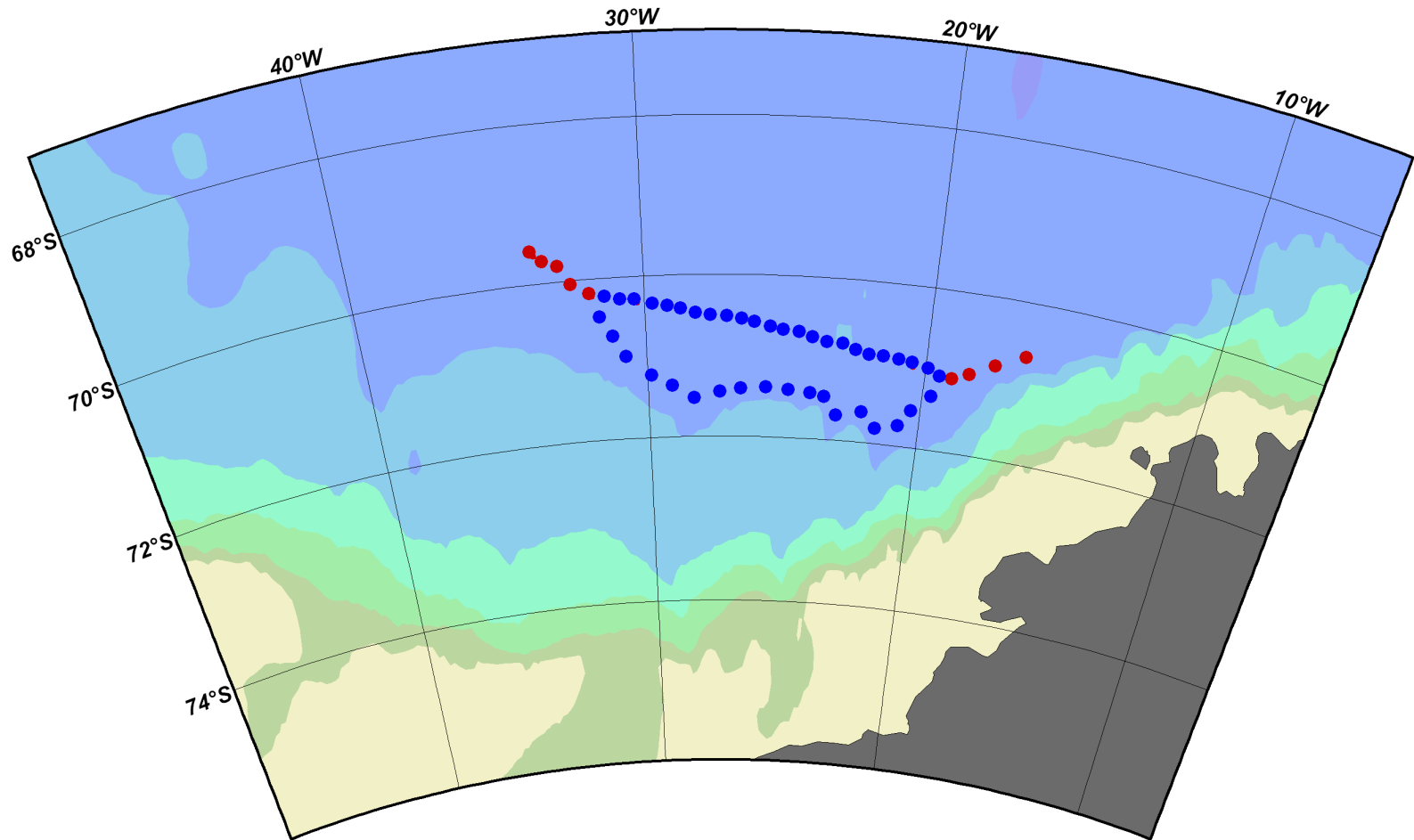
All-season data:



Ice compatibility of Argo floats: a 3 step process

Ice sensing algorithm2 (ISA2) 2007	Interim storage (iStore) 2005	RAFOS 2008
Aborts ascent when sea – ice is expected at the surface +Retarded response	Provides delayed mode profile when surfacing impossible	Provides subsurface profile position when surfacing impossible
Successful Update under test	Successful	

Need of RAFOSs

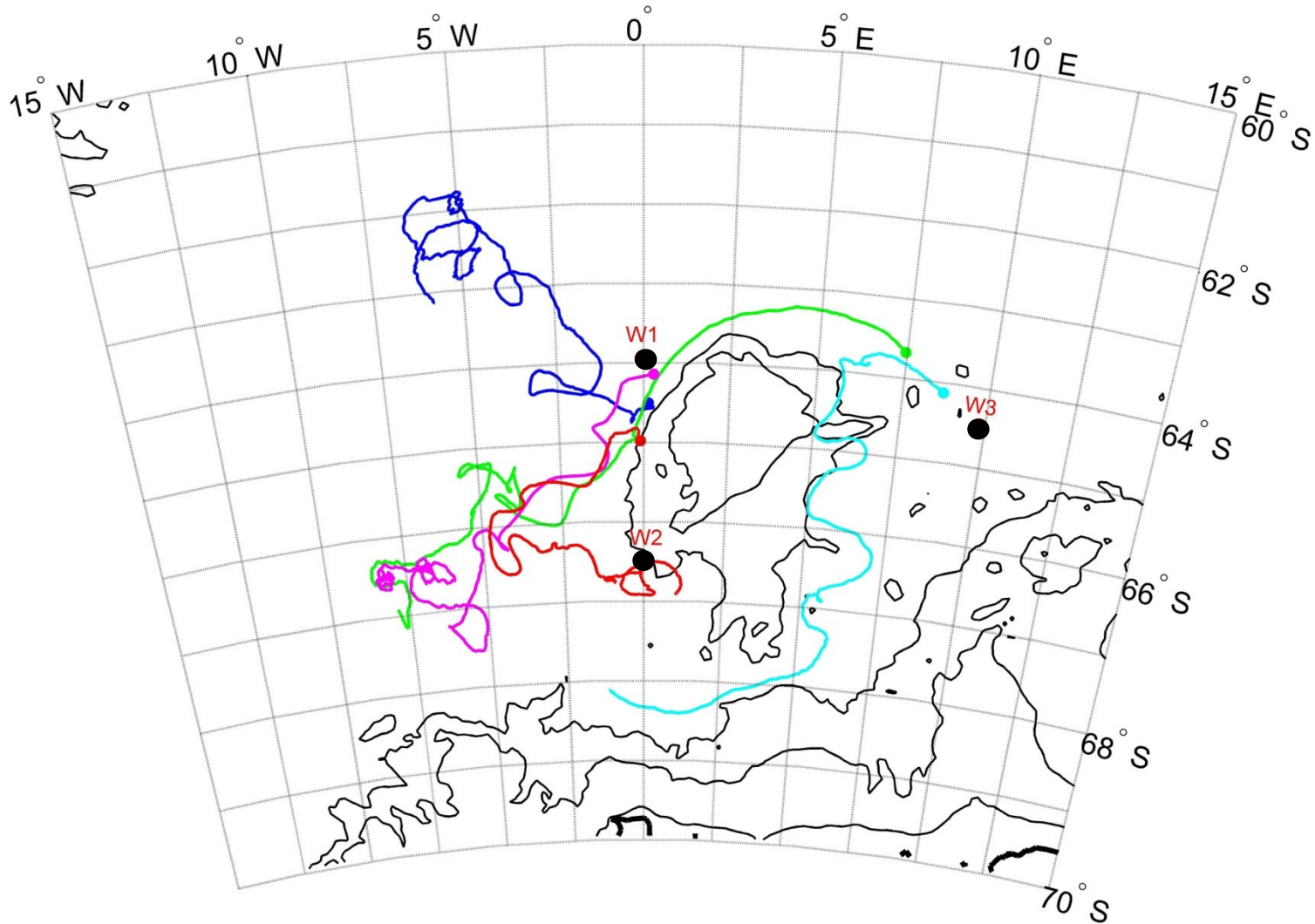


Ocean Data View

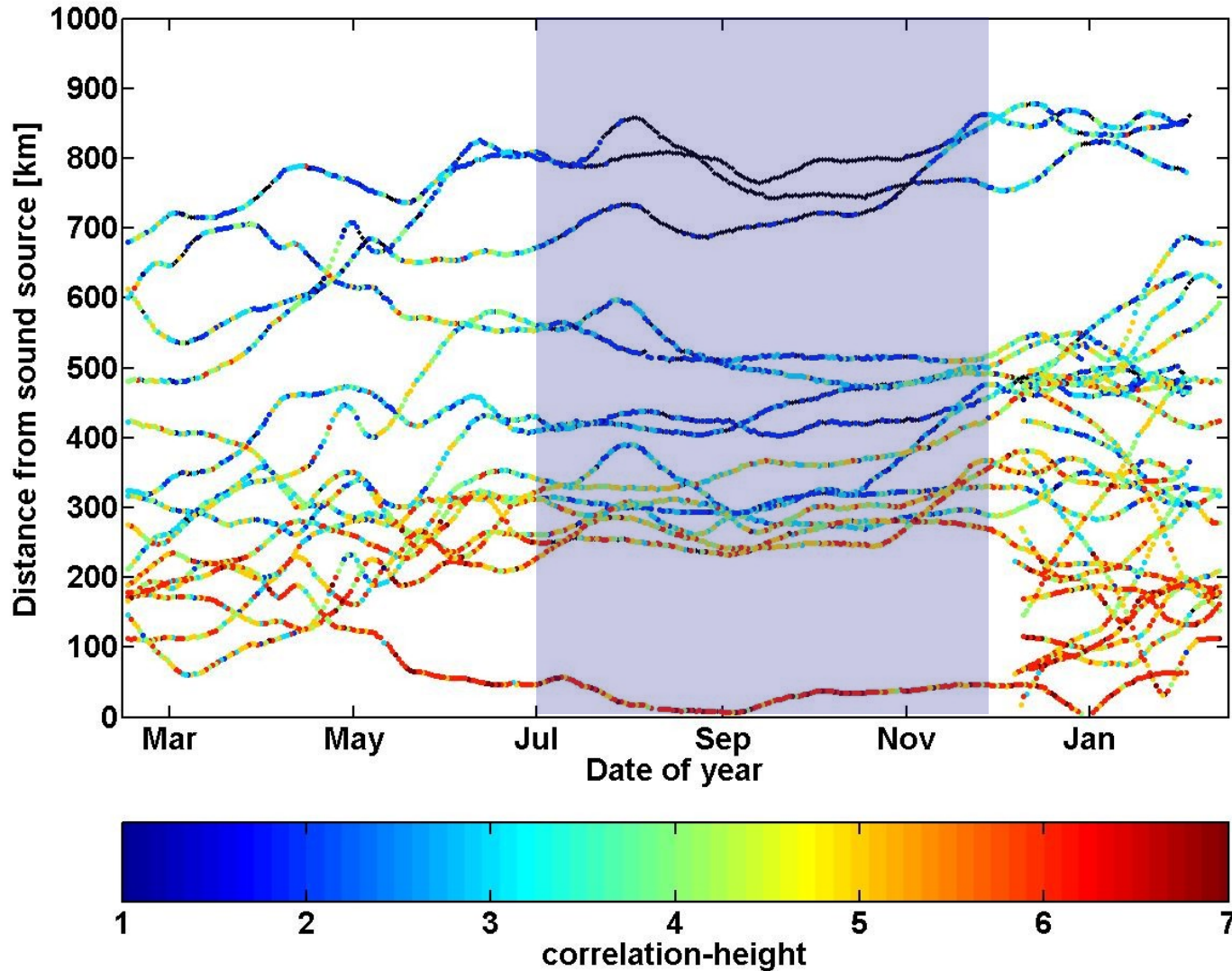
Ice compatibility of Argo floats: a 3 step process

Ice sensing algorithm2 (ISA2) 2007	Interim storage (iStore) 2005	RAFOS 2008
<p>Aborts ascent when sea – ice is expected at the surface</p> <p>+Retarded response</p>	<p>Provides delayed mode profile when surfacing impossible</p>	<p>Provides subsurface profile position when surfacing impossible</p>
<p>Successful Update under test</p>	<p>Successful</p>	

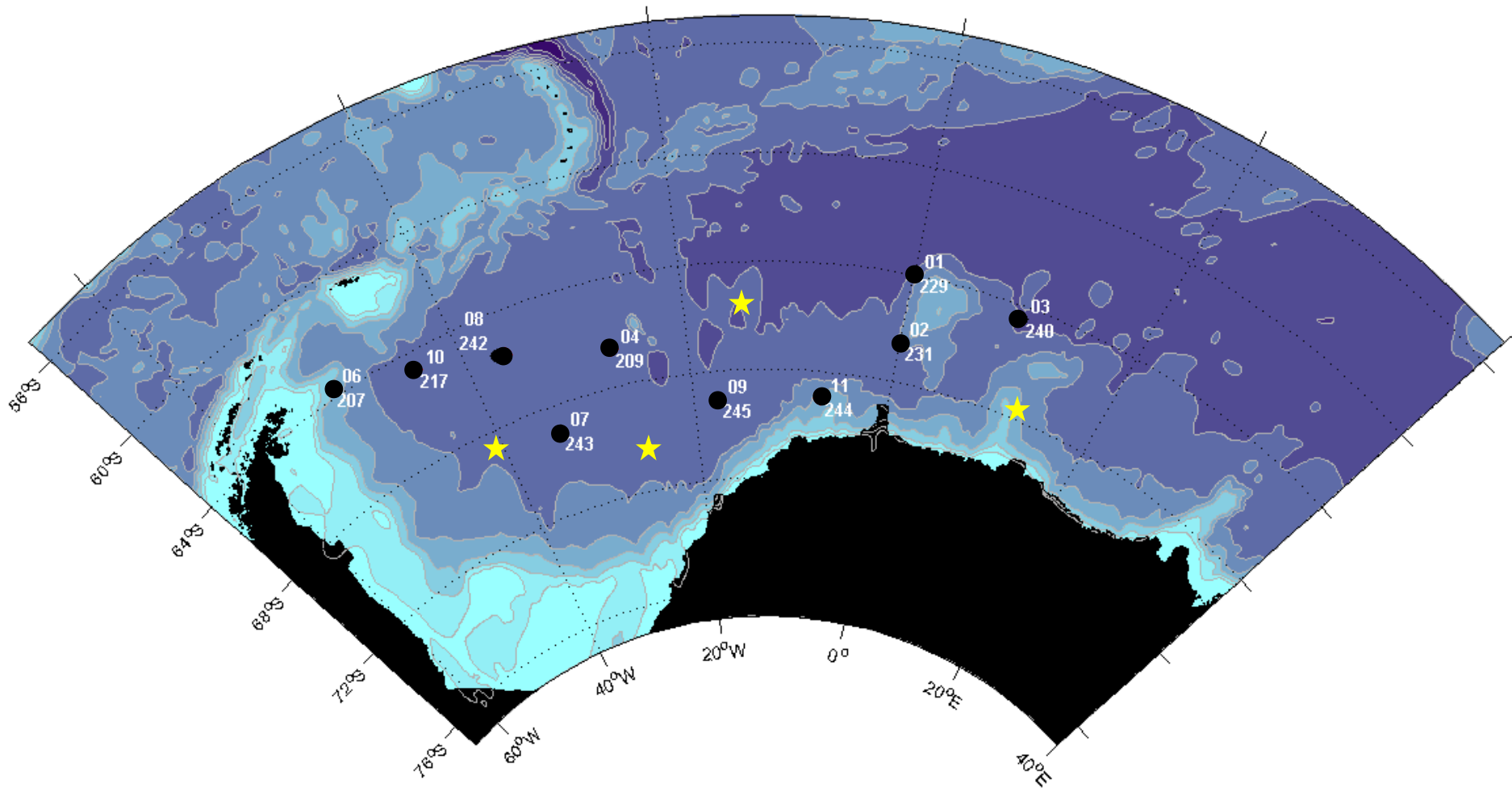
RAFOS subsurface tracking



Range of RAFOS-signals in the Weddell Sea



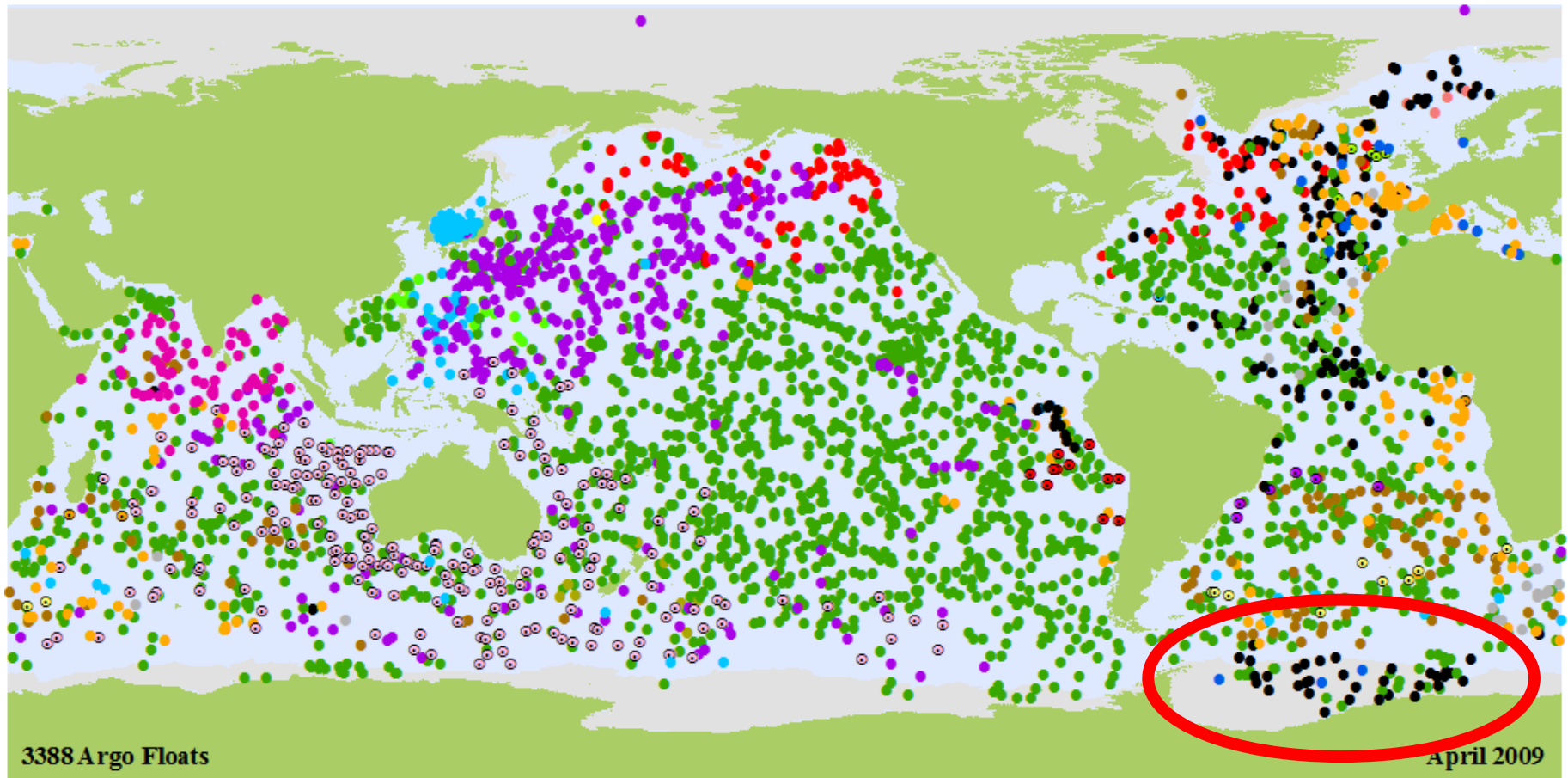
Ice compatibility of Argo floats: 2009: array of 10 Sound Sources installed



Ice compatibility of Argo floats: a 3 step process

Ice sensing algorithm2 (ISA2) 2007	Interim storage (iStore) 2005	RAFOS 2008
Aborts ascent when sea – ice is expected at the surface +Retarded response	Provides delayed mode profile when surfacing impossible	Provides subsurface profile position when surfacing impossible
Successful Update under test	Successful	Successful An array of sound sources is installed

Recent ARGO float distribution



○ ARGENTINA (11)	● CHILE (11)	● FRANCE (158)	● IRELAND (7)	● NETHERLANDS (24)	● SPAIN (2)
○ AUSTRALIA (222)	● CHINA (33)	● GABON (1)	● JAPAN (375)	● NEW ZEALAND (8)	● UNITED KINGDOM (117)
● BRAZIL (6)	● ECUADOR (3)	● GERMANY (182)	● SOUTH KOREA (103)	● NORWAY (4)	● UNITED STATES (1927)
● CANADA (104)	● EUROPEAN UNION (17)	● INDIA (69)	● MAURITIUS (3)		

Outlook

- Combine the Argo-data with a regional GCM with data assimilation (MITgcm)
- Test of the Arctic ISA
 - Deployment of two Nemo-floats in the Arctic Ocean (July)
- Test of Iridium communication
- Determine the range of RAFOS in the Arctic (2010)
 - design of the sound source array (Fram Strait)

